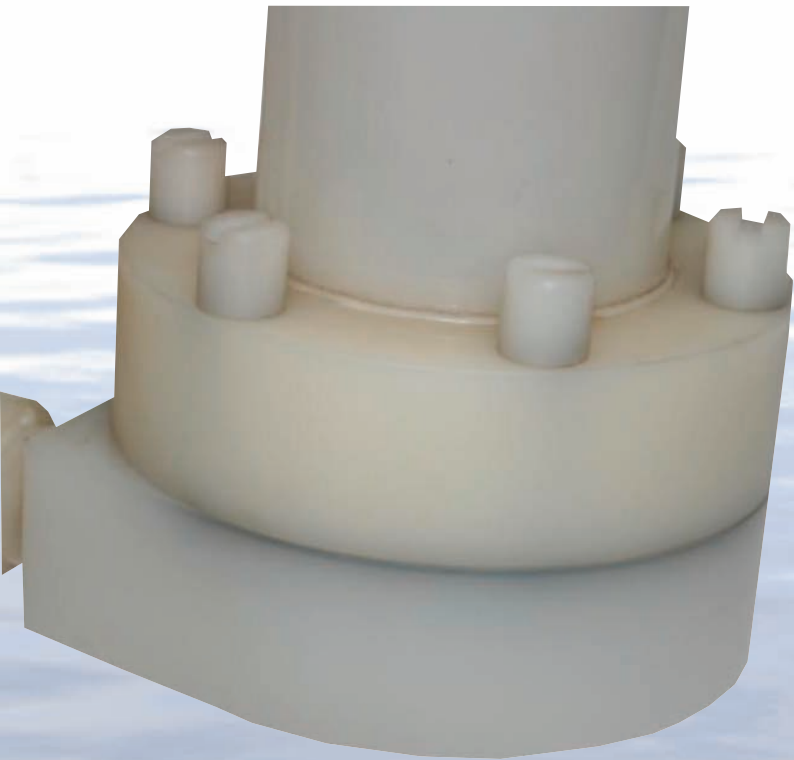


VSL Range

Vertical Sump Pumps



Capacity to 70 m³/hr

Head to 40 metres

**Close Coupled for Economical
Installation**

Machined from Solid

Exceptionally Rugged & Robust

Corrosion Resistant

Non-Metallic

For use in the chemical, environmental protection, effluent treatment, metal treatment industries and many other corrosive applications. VSL vertical pumps provide a cost-effective and efficient solution in many applications.

VSL pumps are of cantilever shaft design with a double balanced impeller - this means no mechanical seals or bearings are used and the pumps are able to run dry indefinitely. A polypropylene thrower protects the motor bearings from harmful and corrosive fumes.

The pumps may be mounted internally or externally enabling valuable space to be fully utilised.



The wetted parts are fully corrosion resistant and are available in Polypropylene, PVC, PVDF or 316 Stainless Steel with a choice of O-ring materials to suit the application. A mounting plate and discharge pipework are included as standard items.

All VSL pumps come in a standard 400 mm column length. Suction extensions, non-return valves, strainers and level control switches are all readily available as optional extras. Complete packages including sump tanks can be supplied to meet your specific requirements.

Standard metric frame electric motors are used throughout the range in all specifications.

T: 01425 627700 F: 01425 627711

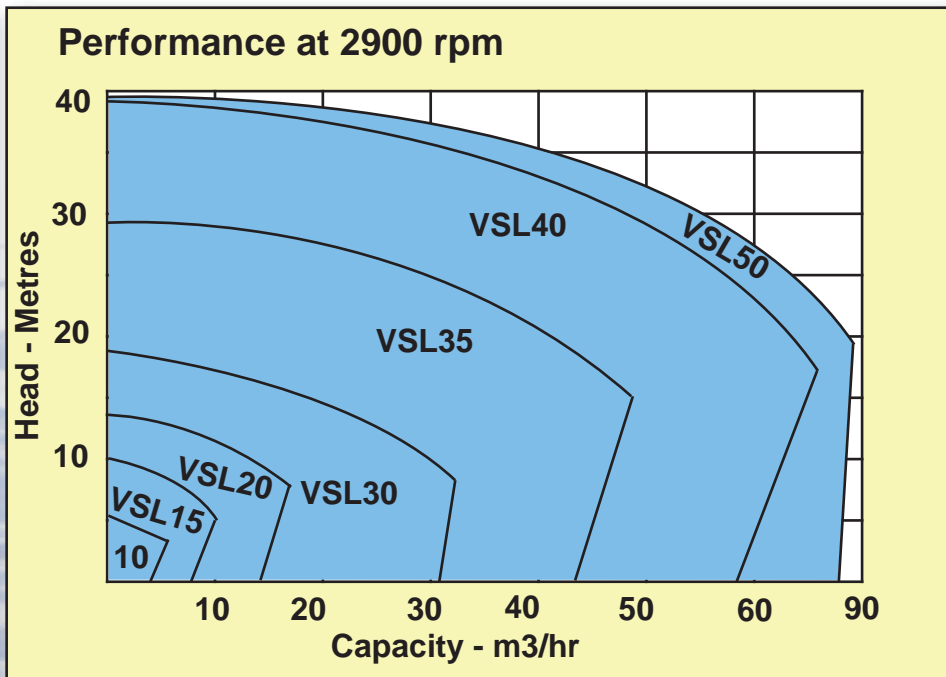
sales@crestpumps.co.uk www.crestpumps.co.uk
13b Queensway New Milton Hampshire BH25 5NN

VSL Range

Vertical Sump Pumps

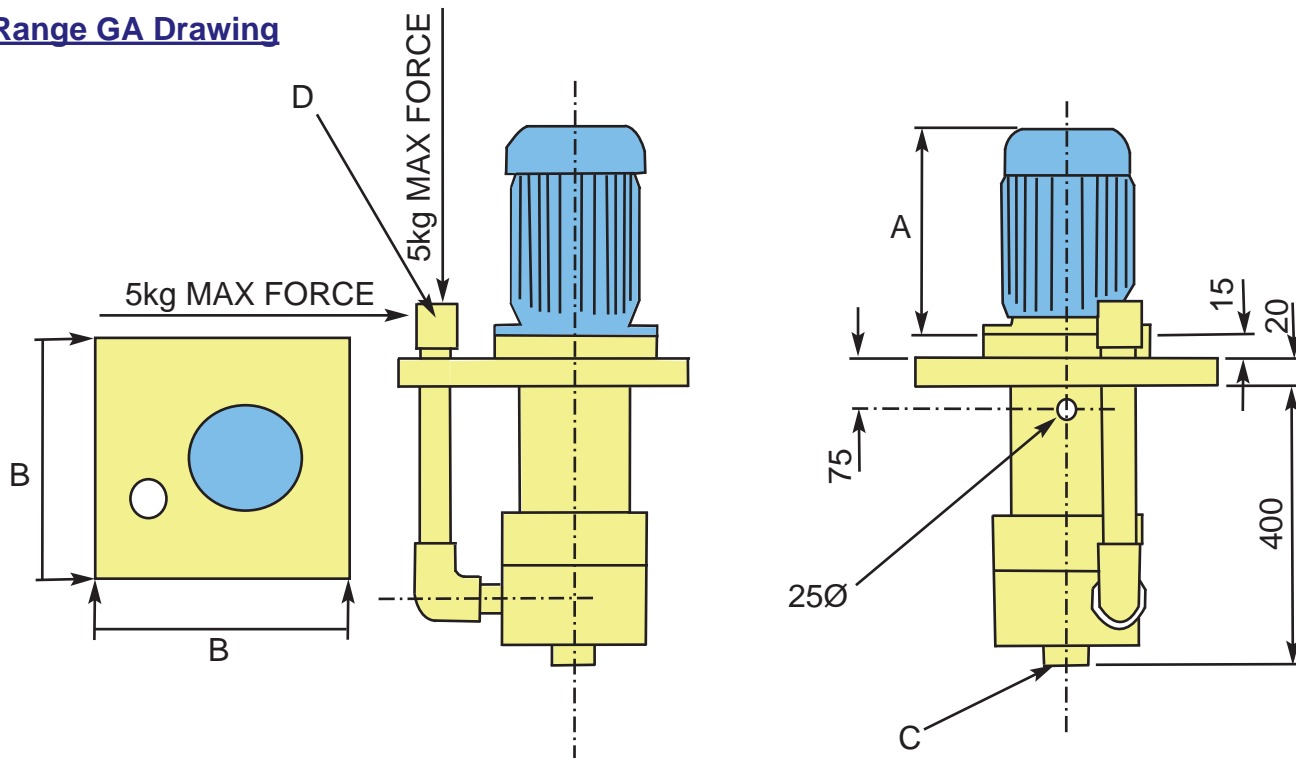


Wet End	Polypropylene, PVC, PTFE, PVDF, 316 Stainless Steel
O-Rings	Viton as standard with other materials available
Shaft	316 stainless steel sleeved by plastic
Suction	Usually flooded - Suction extension pipes with non return valves & strainers can be fitted up to 2 metres
Branches	BSP female as standard. Flanges to all specifications can be fitted as optional extras



Pump	A*	B	C bsp f	D bsp f
VSL10	Depends	300	1.25"	1"
VSL15	on	300	1.25"	1"
VSL20	the	350	1.5"	1.25"
VSL30	motor	350	2"	1.5"
VSL35	type	500	2.5"	2"
VSL40	used	500	2.5"	2"

VSL Range GA Drawing



T: 01425 627700 F: 01425 627711

sales@crestpumps.co.uk www.crestpumps.co.uk
13b Queensway New Milton Hampshire BH25 5NN