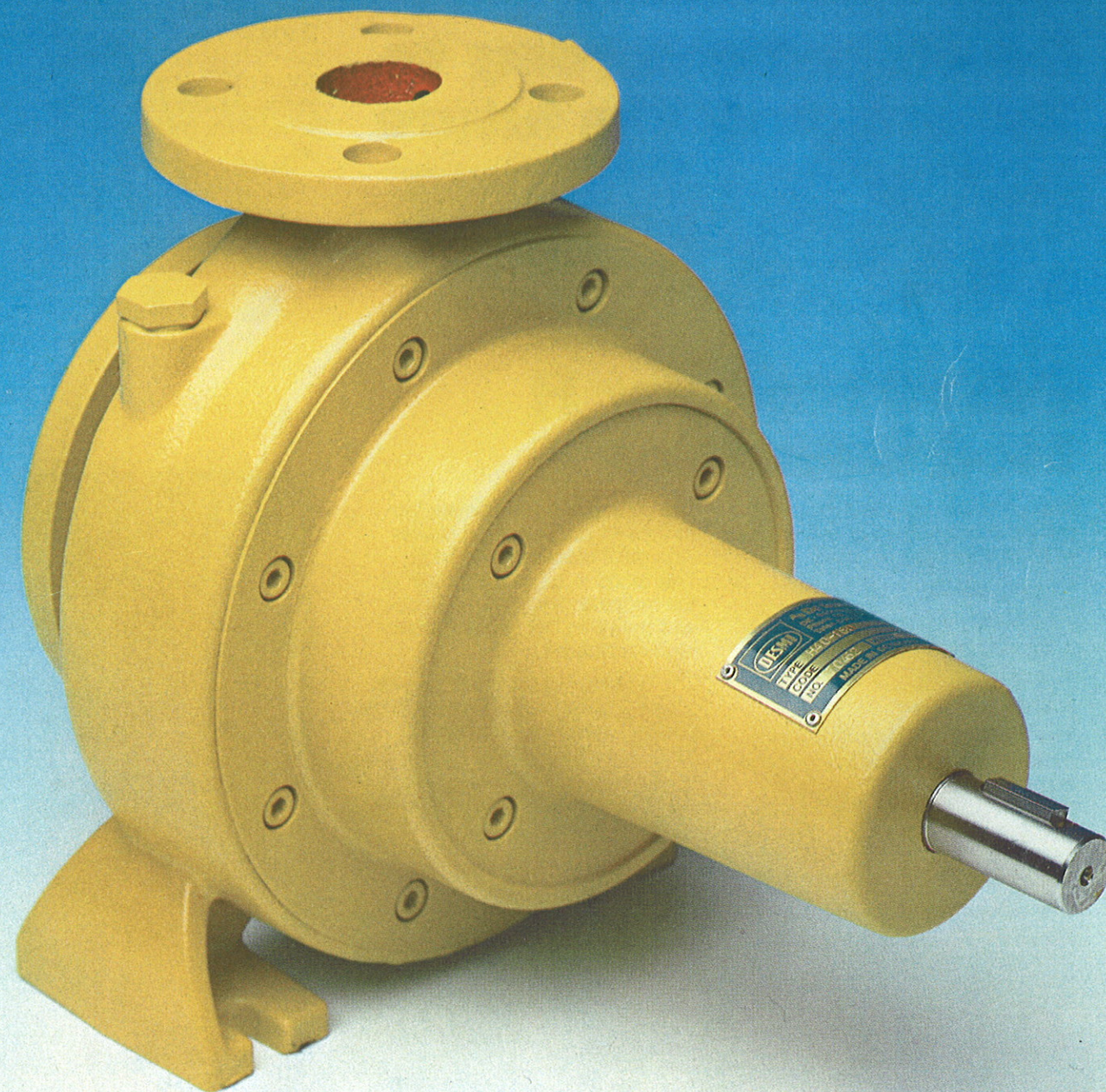


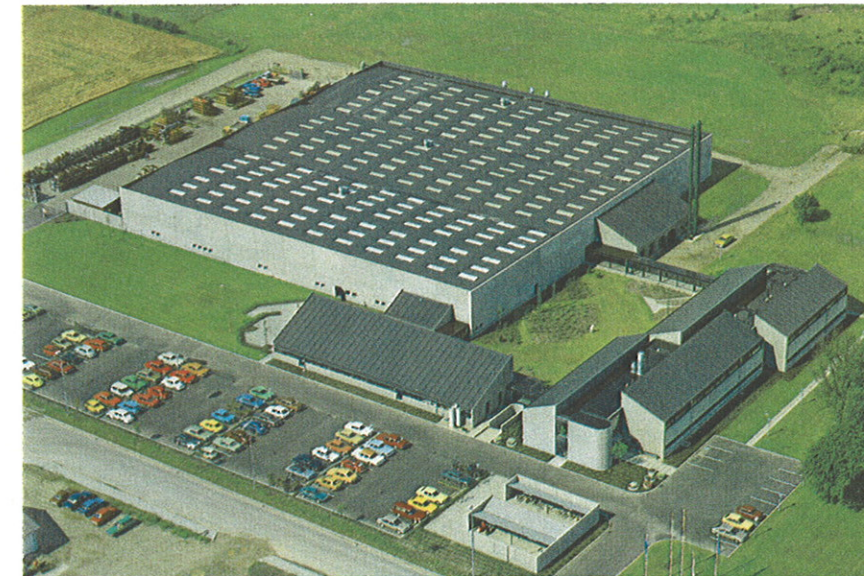
# Modular H



®



## DESMI – in step with development

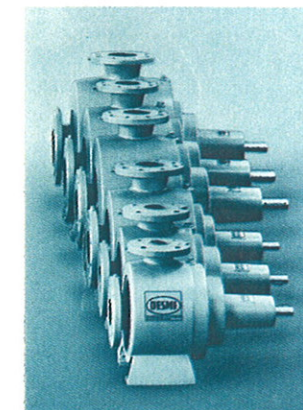
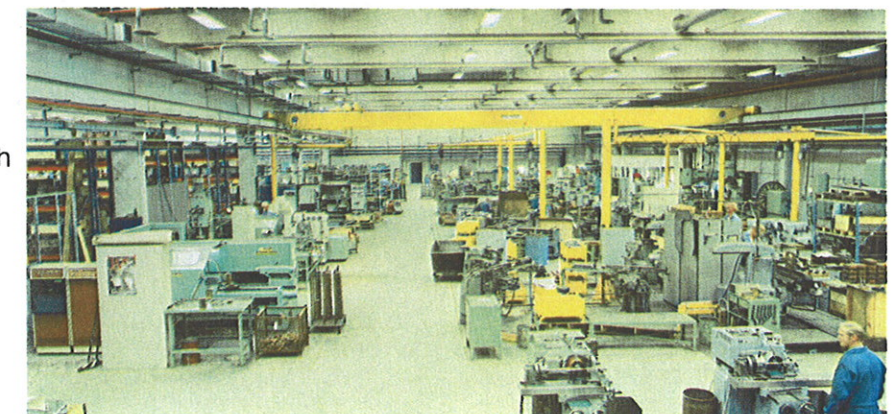


The modern production plant of A/S DE SMITHSKE comprises 10,000 m<sup>2</sup> of production, welfare and administration facilities. After the inauguration in 1978 the buildings were awarded several prizes as some of the most beautiful industrial architecture in Denmark

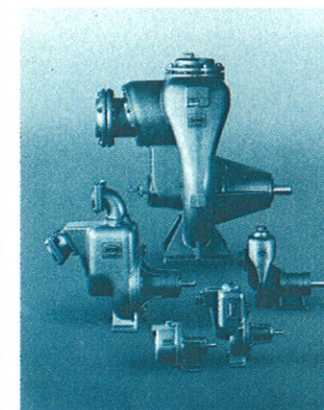


The DESMI pump range also comprises:

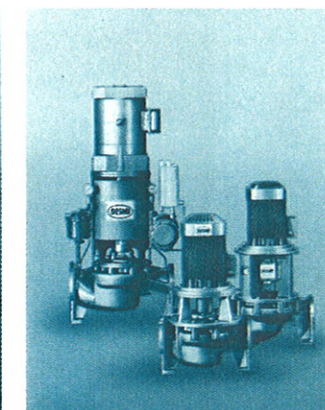
- self-priming centrifugal pumps type Modular S
- self-priming centrifugal pumps type SA, 3/4"-8" pressure branch
- vertical in-line centrifugal pumps type SL
- vertical in-line centrifugal pumps type DKVAZ (axially split casing)
- portable self-priming centrifugal fuel pumps type SA-B
- vertical in-line centrifugal pumps type Modular V



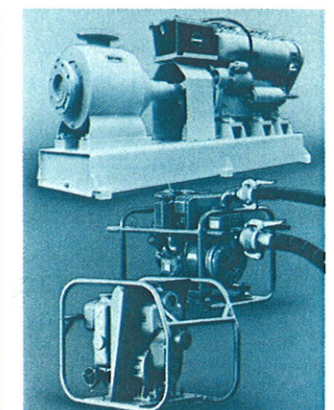
Modular S



SA pumps



SL pumps



Special pumps



®

# A/s De Smithske

Tagholm 1, DK-9400 Nørresundby, P.O. Box 226, Denmark  
Tel.: +45 96 32 81 11, Telex: 69620 desmi dk, Cable: desmidk  
Telefax: +45 98 17 54 99



# DESMI Modular H Material specification

Material combination	A	C
Pump plate	Green	Red
Pump casing	Cast iron GG 20	Cast iron GG 20
Impeller and wear ring	Alu-bronze BS 1400-AB-2	Cast iron GG 20
Bearing housing	Cast iron GG 20	Cast iron GG20
Shaft	Acid-proof stainless steel AISI 329	Acid-proof stainless steel AISI 329
Suction piece	Cast iron GG20	Cast iron GG20
Shaft seal cover	Cast iron GG20	Cast iron GG20
Mechanical shaft seal	Carbon/ceramics	Carbon/ceramics

The DESMI Modular H pump series is the result of further development of the well-known DESMI Modular S pump series.

The aim has been to produce a series of non self-priming horizontal pumps, based on the same components as the S series.

The H pump series has been computer designed in accordance with the latest principles, and the result is a modern, compact pump of ideal dimensions for simple and quick dismantling.

By means of an intensive further development both the efficiency and the capacity of the Modular H series have been improved compared to the S series.

The modular principle is based on a simple construction of standard components which secures easy servicing and low spare parts costs.

Eventually, the Modular H series will consist of totally 33 sizes.

The Modular H series meets the demand for economical and reliable pumps.

The Modular H pumps are the result of more than 50 years' experience producing pumps, supplied to customers all over the world.

Capacity range:  
8-350 m³/h at 50 cycles  
10-400 m³/h at 60 cycles

Pressure range:  
4-100 m WC at 50 cycles  
4-150 m WC at 60 cycles

Data sheet with dimension sketch and details of capacity and delivery head at different revolutions with NPSH-values for each pump type can be obtained from your own pump dealer or from A/S De Smithske.

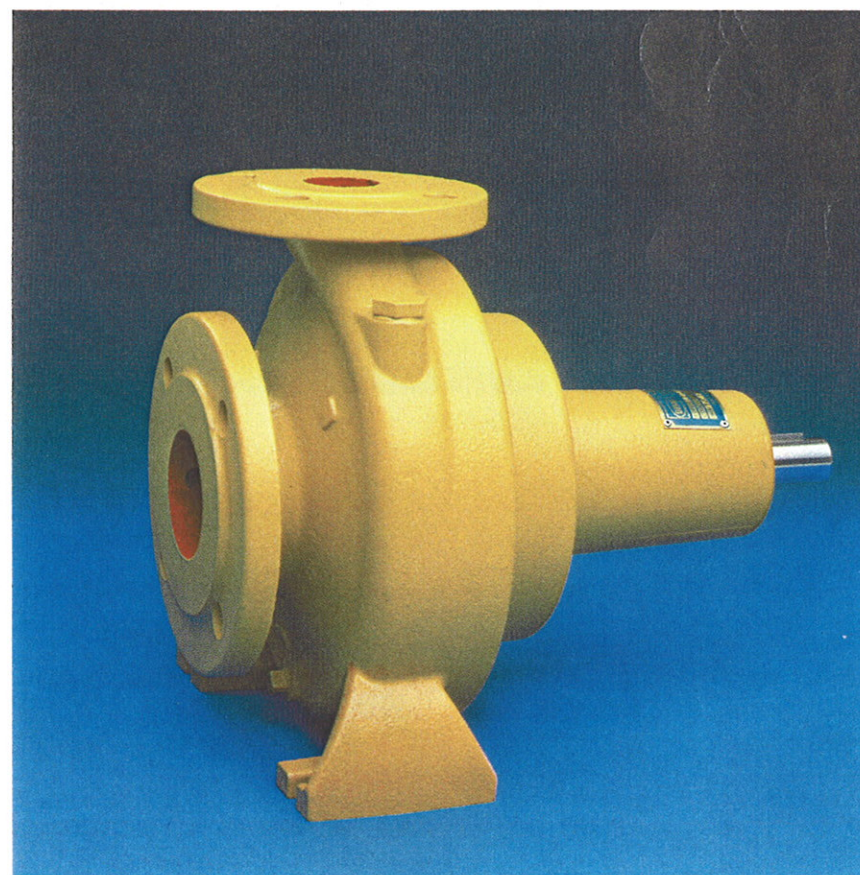
## DESMI Modular H Various combinations of assembling

The pumps of the Modular H series can be supplied with free shaft end, mounted on base plate with petrol or diesel engine, hydraulic or electric motor.

Monobloc version.  
It has the same combination of assembling as the S series.

## DESMI Modular H Special advantages

- Modular construction
- The pump casing conforms to DIN 24255
- Can be supplied in monobloc combination
- As standard the Modular H series is supplied with gauge points on both suction and delivery sides
- The shaft seal cover holds with mechanical shaft seal



Application of EDP in the development of DESMI pumps

## Developed according to the design of the future

The modular H series has been developed by DESMI's own development department, applying the latest technology as e.g. EDP for the construction of the special Modular H design.

The DESMI development department is continuously producing new ideas and is thus enabling DESMI to be in front rank with new products for the benefit of the many thousand users of DESMI pumps all over the world.

The shaft seal cover is fitted with a mechanical shaft seal. This seal is standard with ceramic seat ring which has excellent wear qualities. This excludes wear on the shaft avoiding increased power loads as is often the consequence of wrongly adjusted gland packings fitted in other pumps. Max. liquid temperature 80°C.

The pumps of the Modular H series are – as far as the pump casing is concerned – norm pumps according to DIN 24255. This implies an advantage as the pump can replace many norm pumps, and pricewise this means savings as the price of the Modular H pumps is reasonable and the life of the pumps is long.

### Fields of application

The Modular H series satisfies a large part of the wishes and demands that industry today makes for economical and compact industrial pumps.

The Modular H pumps can therefore form part of most systems where cold/hot water or other liquids are to be transported. Some of the fields of application are:

- waterworks plants
- district heating plants
- sanitary systems
- air conditioning
- cooling plants
- washing plants
- irrigation plants

## DESMI Modular H Modularization

Irrespective of size and capacity the Modular H series is constructed of 5 standard components:

1. pump casing
2. impeller
3. bearing housing
4. suction piece
5. shaft seal cover

The modular principle aids a minimum stockholding as many of the components are common to the different pump sizes. Furthermore, all components, except the pump casing, form part of the well-known DESMI Modular S series.

This means that production costs are low, and consequently our customers will benefit from competitive prices and better service.

The closed impeller is manufactured with single curved blades with relief blades on the back. This leads to an efficient relief of the hydraulic longitudinal forces, and therefore the pump accepts high revolutions.

The bearing housing is fitted with single grooved radial ball bearings dimensioned to a life of about 25,000 working hours.

Suction and pressure branches are designed as flange connections according to DIN 24255.

